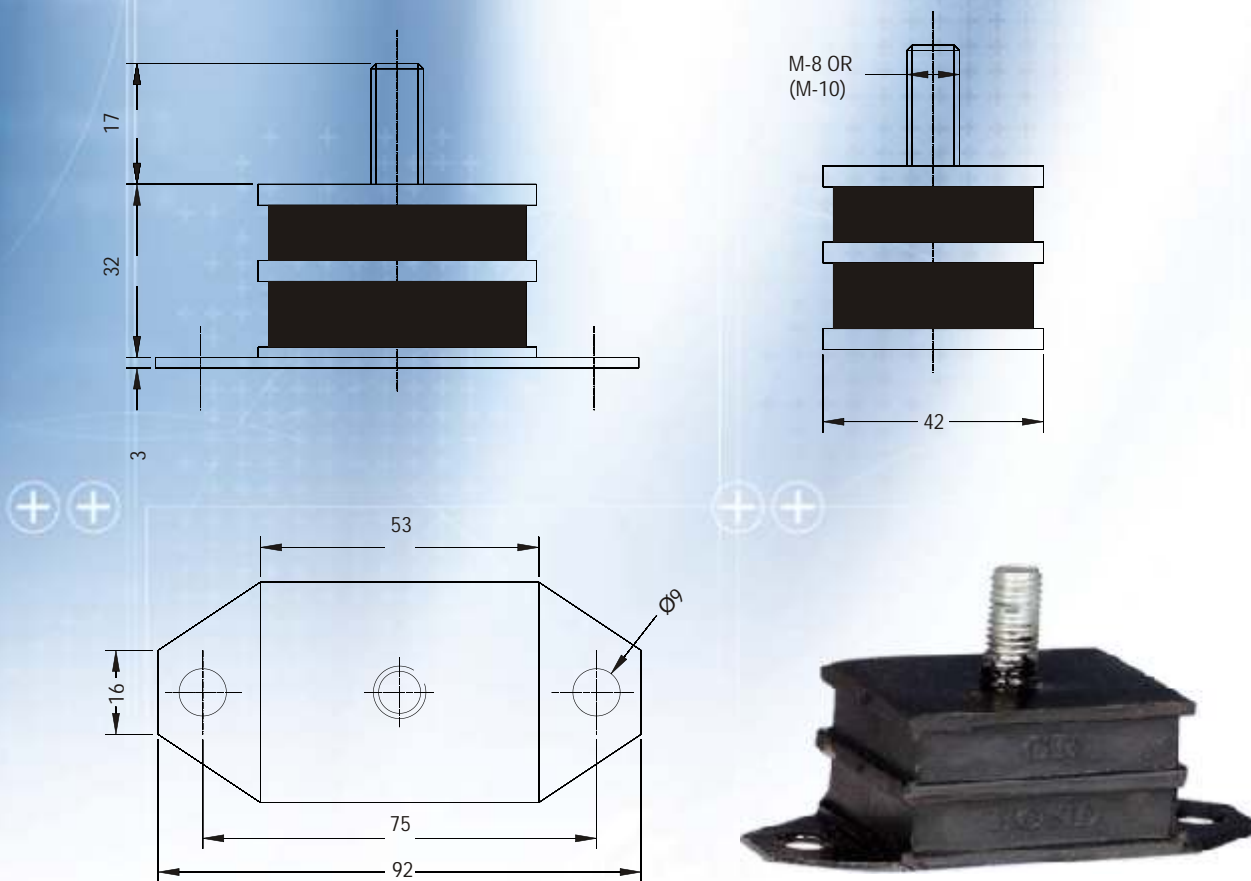


## SANDWICH MOUNT GR-121

Sandwich Mountings are manufactured in four standard sizes known as GR 121/1, GR 121/2, GR1 121/3, GR 121/4. The physical dimensional specifications & rubber specification suits a very wide range of application. The colour code represents the maximum loading capacity as well as hardness. The sandwich mounting are very much suitable for direct compression at various inclination. Rubber to metal bondings permits the mountings to be used either in compression, shear or a combination of both.

The sandwich mountings are used for sound chamber, hopper, heavy installation carriages, construction and suspending the small automobile engine etc. Sandwich mounts are designed to support heavy & sensitive equipment & intermittent or continuous vibrations are eliminated. These mounts are easy to installed & its performance results in longer service life, smoother maintenance operation & reduced maintenance.



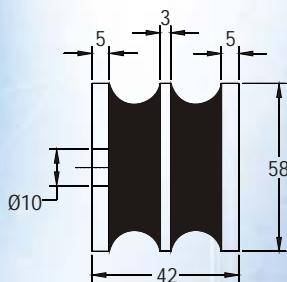
No.	SIZE	Colour Code	Max. Load Capacity (kg.)	DEFLECTION (mm)
01	GR 121/1	BLUE	98	2.9
02	GR 121/2	YELLOW	125	2.9
03	GR 121/3	GREEN	145	2.9
04	GR 121/4	BROWN	215	2.9
05	GR 121/5	RED	325	2.9

## SANDWICH MOUNT RECTANGULAR MOUNTINGS GR-122 & GR-123

Rectangular mountings also known as sandwich mountings and are widely used for engines in road vehicles & mobile construction plant. Rubber in mountings is bonded between two metal plates with holes at each end for fitting. Some designs incorporate steel interleaves for increased load capacity. The mountings are best used in shear & compression but may be loaded directly in shear & compression.

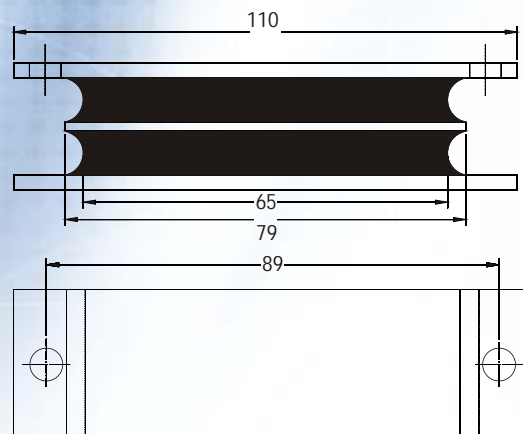
### DESIGN FEATURES

- Moulded in first grade Natural Rubber.
- Steel metals, etch & primed on external surfaces
- Rectangular mountings should not be used in tension or exposed to contamination by mineral oil.



### TYPICAL APPLICATION

- Lift head gear
- Engine mountings for road vehicles
- Mobile construction plant
- Hoppers
- Heavy plants
- Conveyor system

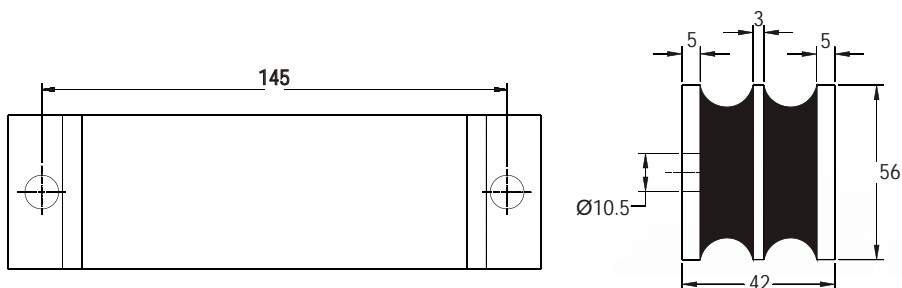


NO	SIZE	Max. Load Capacity(Kg.)	Deflection (mm)	Colour Code
1	GR-122/1	140	3	Blue
2	GR-122/2	240	3	White
3	GR-122/3	375	3	Green

### SANDWICH MOUNT GR - 122



NO	SIZE	Max. Load Capacity(Kg.)	Deflection (mm)
1	GR-123/1	410	3
2	GR-123/2	615	3
3	GR-123/3	880	3
4	GR-123/4	1050	3
5	GR-123/5	2000	3



### SANDWICH MOUNT GR - 123

#### PARTH INDUSTRIES

SHEAD NO. C1/B6, PLOT NO. 65/6, OPP BANK OF BARODA,  
F ROAD, PHASE-1, GIDC VATVA, AHMEDABAD-382445

PH: +91-79-25831548, 32203031, MO:- 91-9327013167-9374025121

Web:- [www.parthind.com](http://www.parthind.com), E-mail:- [hasmukh@parthind.com](mailto:hasmukh@parthind.com)

## SANDWICH MOUNT RECTANGULAR MOUNTINGS GR-125 TO GR-127

Sandwich Mounting are design & manufactured in various sizes suitable to Engines & particularly in Automobiles Engine.. The Sandwich Mounts are suitable for direct compression shear and torque loads depending upon the applied load & also at a various inclination to suit the individual Engine requirement. The Sandwich Mountings are suitable for Sound Chambers, Hoppers heavy installation carriage construction and suspending or installation of Automobile Engines & Mobile Construction Plants.

The moulding is first grade Natural Rubber, The steel metals are primed on external surfaces

### DESIGN FEATURES

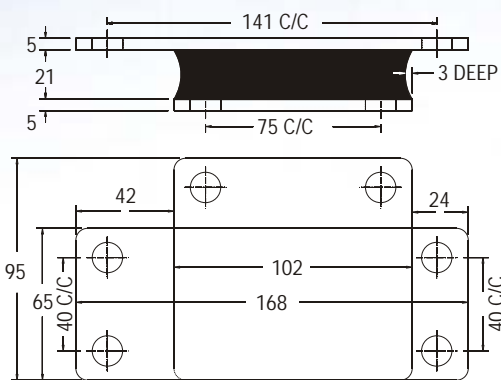
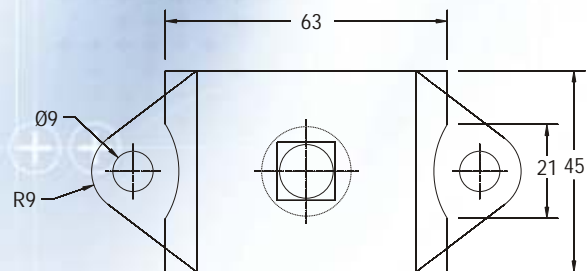
- Moulded in first grade Natural Rubber
- Steel metals are etch & primed on external surfaces
- Rectangular mountings should not be used in tension or not exposed for contamination by mineral oil.

### TYPICAL APPLICATION

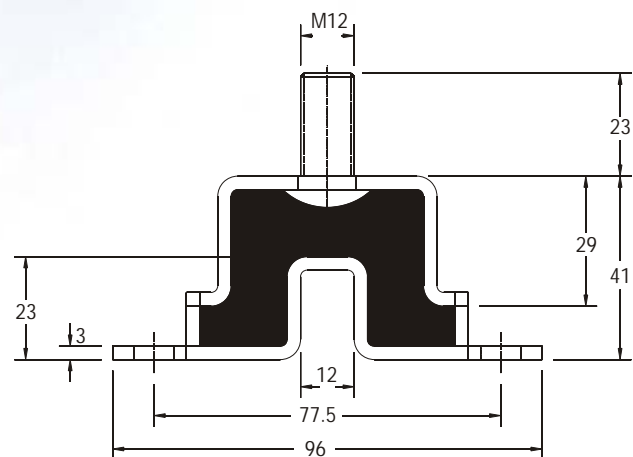
- Lift head gear
- Engine mountings on road vehicles including Automobile Engines
- Mobile construction plant
- Hoppers
- Heavy plants
- Conveyor system



GR BOND SANDWICH GR 127



GR BOND SANDWICH GR-125



GR BOND SANDWICH GR-126