

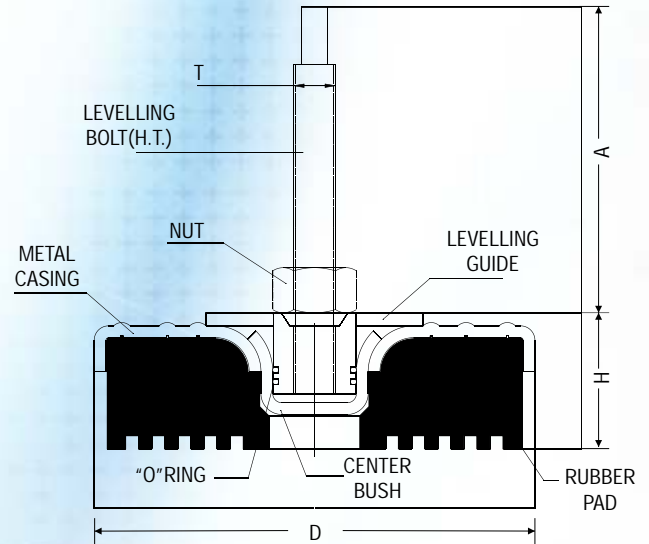
## MACHINE MOUNT GR-311 TO GR 314, GR-315 TO GR 317.

GR BOND Machine mounts are ready to use for Workshop Machineries No need of foundation , foundation Bolt, grouting, anchoring etc. It is very fast for installation of any Workshop Machineries. A height adjustment & precise levelling features are provided. It will provide excellent mobility of machinery layout in workshop. It insulate high frequency vibration, sound & prevent wondering of machineries due to the large area of contact with the floor & keeps the machineries in position firmly. It safe guards the surrounding installed machines from shocks & impacts of installed machineries.

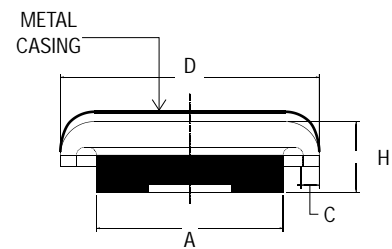
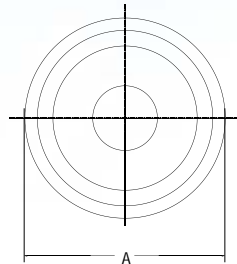
These mounts are used in all places where you need safe machine installation without floor anchorage. It is beneficial on working performance, Working condition in the adjacent primises, such as offices & laboratory, are enormously improved.

### APPLICATION

- Punching Machine
- Presses
- Injection Moulding Machine
- Shaping Machine
- Lathe & CNC lathes
- Precision Machine



MACHINE MOUNT	GR-311	GR-312	GR-313	GR-314
D	80 mm	120 mm	160 mm	200 mm
H	38-50 mm	46-59 mm	53-68 mm	63-78 mm
A	87 mm	79 mm	122 mm	122 mm
T	M12	M16	M20	M20
Loading Capacity / Mount	50-450kgs	400-1000kgs	800-1900kgs	1500-3800kgs



MACHINE MOUNT	GR-315	GR-316	GR-317
D	85 mm	120 mm	160 mm
H	30 mm	40 mm	45 mm
A	60 mm	80 mm	115 mm
C	6 mm	10 mm	10 mm
Bolt size	M12	M12/M16	M16/M12
Loading Capacity / Mount	50-450kgs	400-1000kgs	800-1200kgs

### PARTH INDUSTRIES

SHEAD NO. C1/B6, PLOT NO. 65/6, OPP BANK OF BARODA,  
 F ROAD, PHASE-1, GIDC VATVA, AHMEDABAD-382445  
 PH: +91-79-25831548, 32203031, MO:- 91-9327013167-9374025121  
 Web:- www.parthind.com, E-mail:- hasmukh@parthind.com

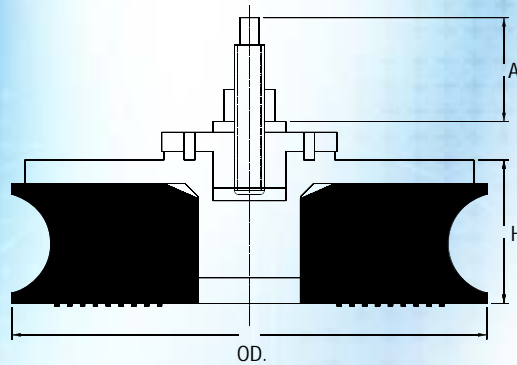
## MACHINE MOUNT GR-318 TO 321

GR BOND Machine mounts are ready to use for Workshop Machineries No need of foundation , foundation Bolt, grouting, anchoring etc. It is very fast for installation of any Workshop Machineries. A height adjustment & precise levelling features are provided. It will provide excellent mobility of machinery layout in workshop. It insulate high frequency vibration, sound & prevent wondering of machineries due to the large area of contact with the floor & keeps the machineries in position firmly. It safe guards the surrounding installed machines from shocks & impacts of installed machineries.

These mounts are used in all places where you need safe machine installation without floor anchorage. It is beneficial on working performance, Working condition in the adjacent primises, such as offices & laboratory, are enormously improved.

### APPLICATION

- Punching Machine
- Presses
- Injection Moulding Machine
- Shaping Machine
- Lathe & CNC lathes
- Precision Machine



DIMENSIONS	MACHINE MOUNTS MODEL			
	GR-318	GR-319	GR-320	GR-321
A mm	120(M12 & M16)	120(M 16)	120(M 16)	120(M16 & M20)
OD mm	80	120	160	200
H mm	43-55	48-60	57-70	65-80

APPLICATION		LOADS IN KG.			
		GR-318	GR-319	GR-320	GR-321
MAX. STATIC LOAD OF MACHINE		600	1800	3000	5000
MACHINE TOOLS		400	1100	2100	3500
GRINDING MACHINE (ROTATING)		350	900	1500	2500
GRINDING MACHINE (RECIPROCATING)		200	450	750	1300
LATHE MACHINE		200	450	740	1300
MILLING MACHINE		200	450	750	1300
POWER PRESS	200 STROCKS/MIN	120	250	700	1200
	160 STROCKS/MIN	140	300	900	1500
	125 AND LESS (STROCKS/MIN)	200	430	1250	2200